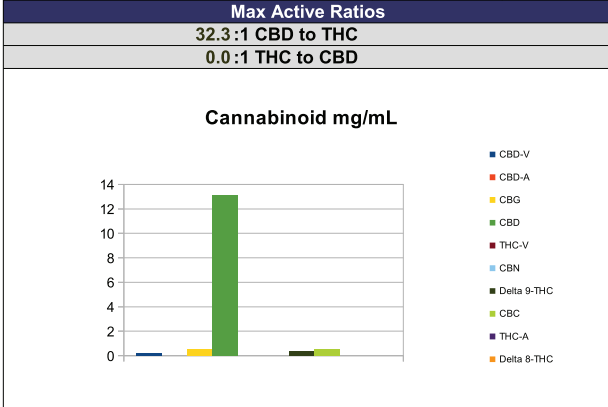



Sample Information			
Sample Identification	Peppermint		
Laboratory Number	2019016743		
Batch Number	NA		
Matrix	Tincture		
Analyzed Date	08/09/19		
Extraction Date	08/09/19		
Cannabinoid (HPLC)	mg/mL	mg/Bottle	%
Compound			
CBD-V	0.17	2.61	0.02%
CBD-A	ND	ND	ND
CBG	0.5	7.45	0.05%
CBD	16.07	241.19	1.76%
THC-V	ND	ND	ND
CBN	ND	ND	ND
Delta 9-THC	0.2	3.035	0.02%
CBC	0.51	7.62	0.06%
THC-A	ND	ND	ND
Delta 8-THC	ND	ND	ND
Cannabinoids Total			
Max Active THC	0.2	3.035	0.02%
Max Active CBD	16.07	241.19	1.76%
T. Active Cannabinoids	17.46	261.90	1.92%
Total Cannabinoids	17.46	261.90	1.92%



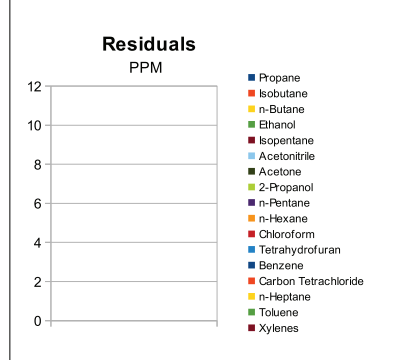
**Sample Image**



**Micro Visual:** NT

**Percent Moisture:** NT

RS (GCMS-HS) Compound	PPM	RL
Propane	NT	5.0
Isobutane	NT	5.0
n-Butane	NT	5.0
Ethanol	NT	5.0
Isopentane	NT	5.0
Acetonitrile	NT	5.0
Acetone	NT	50.0
2-Propanol	NT	5.0
n-Pentane	NT	5.0
n-Hexane	NT	5.0
Chloroform	NT	5.0
Tetrahydrofuran	NT	5.0
Benzene	NT	5.0
Carbon Tetrachloride	NT	5.0
n-Heptane	NT	5.0
Toluene	NT	5.0
Xylenes	NT	10.0



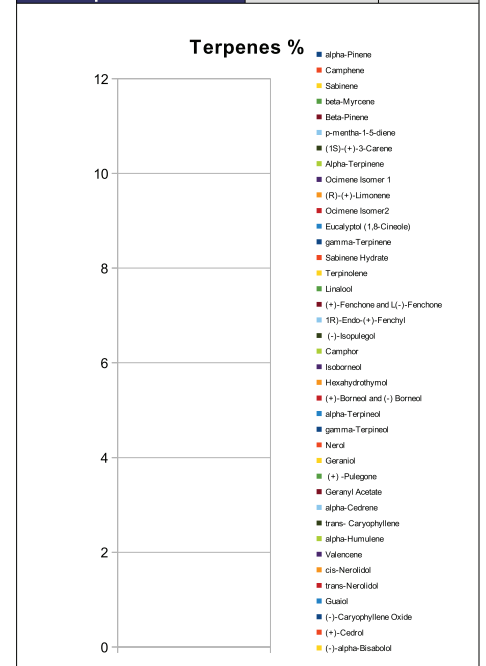
<b>mL/Bottle</b>	15
<b>mg THC/Bottle</b>	3.035
<b>mg CBD/Bottle</b>	241.19
<b>(mg) total cannabinoids/bottle</b>	261.90

Metals Compound	PPM	RL
Lead	NT	0.018
Arsenic	NT	0.007
Cadmium	NT	0.004
Mercury	NT	0.020

Microbial Compound	CFU/g
Enterobacteriaceae	NT
Coliform	NT
Ecoli	NT
Aerobic	NT
Yeast	NT
Mold	NT



Terpene (GC-MS) Compound	mg/mL	mg/Bottle
alpha-Pinene	NT	NT
Camphene	NT	NT
Sabinene	NT	NT
beta-Myrcene	NT	NT
Beta-Pinene	NT	NT
p-mentha-1-5-diene	NT	NT
(1S)-(+)-3-Carene	NT	NT
Alpha-Terpinene	NT	NT
Ocimene Isomer 1	NT	NT
(R)-(+)-Limonene	NT	NT
Ocimene Isomer2	NT	NT
Eucalyptol (1,8-Cineole)	NT	NT
gamma-Terpinene	NT	NT
Sabinene Hydrate	NT	NT
Terpinolene	NT	NT
Linalool	NT	NT
(+)-Fenchone and L(-)-Fenchone	NT	NT
1R)-Endo-(+)-Fenchyl	NT	NT
(-)-Isopulegol	NT	NT
Camphor	NT	NT
Isoborneol	NT	NT
Hexahydrothymol	NT	NT
(+)-Borneol and (-) Borneol	NT	NT
alpha-Terpineol	NT	NT
gamma-Terpineol	NT	NT
Nerol	NT	NT
Geraniol	NT	NT
(+) -Pulegone	NT	NT
Geranyl Acetate	NT	NT
alpha-Cedrene	NT	NT
trans- Caryophyllene	NT	NT
alpha-Humulene	NT	NT
Valencene	NT	NT
cis-Nerolidol	NT	NT
trans-Nerolidol	NT	NT
Guaiol	NT	NT
(-)-Caryophyllene Oxide	NT	NT
(+)-Cedrol	NT	NT
(-)-alpha-Bisabolol	NT	NT
<b>Total Terpenes</b>	NT	NT



Chemist: SF  
Report Expires: 11/08/19

RL=Reporting Limit  
NA=Not Applicable  
NT=Not Tested  
ND=Non Detected  
TNTC=Too Numerous to Count